



FIAT DUCATO LWB

FITTING INSTRUCTIONS

Commercial & 4WD Roof Rack Systems

Tradesman Roof Racks have made every effort to provide correct information contained within the instructions. We retain the right to alter installation specifications and instructions without notice. Always consult us for the latest installation specifications and instructions.

Please carefully read this document before fitting the roof rack.

For installation specification & instruction updates contact:

enquiries@tradesmanroofracks.com.au

FITTING INSTRUCTIONS

INSTRUCTION

Thank you for purchasing a Tradesman Roof Rack for you Renault Master.

The tools required for this fitment are as follows.

- 17mm spanner and or socket
- 13mm spanner and or socket
- 5mm drill bit
- 8mm drill bit
- Cordless drill
- Magnet or air gun to remove swarf
- Silicone sealant – black roof and gutter from your local hardware will be fine
- Paint pen marker
- Ladder

Due to the height of the vehicle the hardest part of this fitting is raising the rack onto the roof.

This can be done with help for a few friends and can be made easy by mounting the rails first minus the t-bolts which will allow the rack to be slide along them aiding in the lifting process.

Contained in the kit you will receive

- Roof rack
- 4 x mounting rails
- Hardware kit – containing 8 x T-bolts, 12 x 8mm mounting bolts 12 x washers and 12 x nuts.

FITTING INSTRUCTIONS

Find the four mounting rails.

There will be two folded left and two folded right.

Page | 2

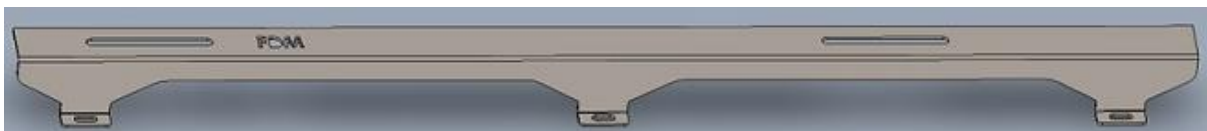
There position on the roof is top flat with the long mounting slot mounted inwards and the three mounting feet towards the outside of the roof.

Take note of the position of the mounting slots.

Mount the **FRONT** rail with the slot closets to the end to the front like below.



Mount the **REAR** rail with the slot closets to the end to the back like below.



FITTING INSTRUCTIONS



Page | 3

Starting with the rear rails.

Slide the rail back as far as possible to the end of the roof channel. This should be at least 290mm for the back of the van.

Mark the holes for each foot per the rail.



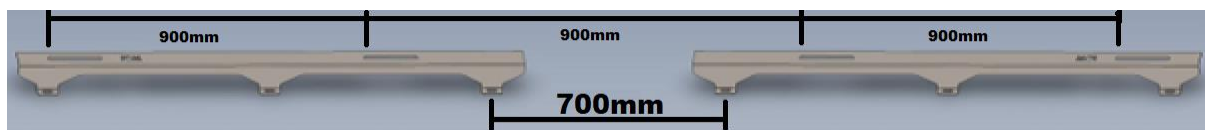
FITTING INSTRUCTIONS

The distance between the front and rear rail mounting holes are as follows.

LONG WHEELBASE – Measure 700mm from mounting hole to mounting hole.

Page | 4

SEE DIAGRAM BELOW AS A REFERENCE



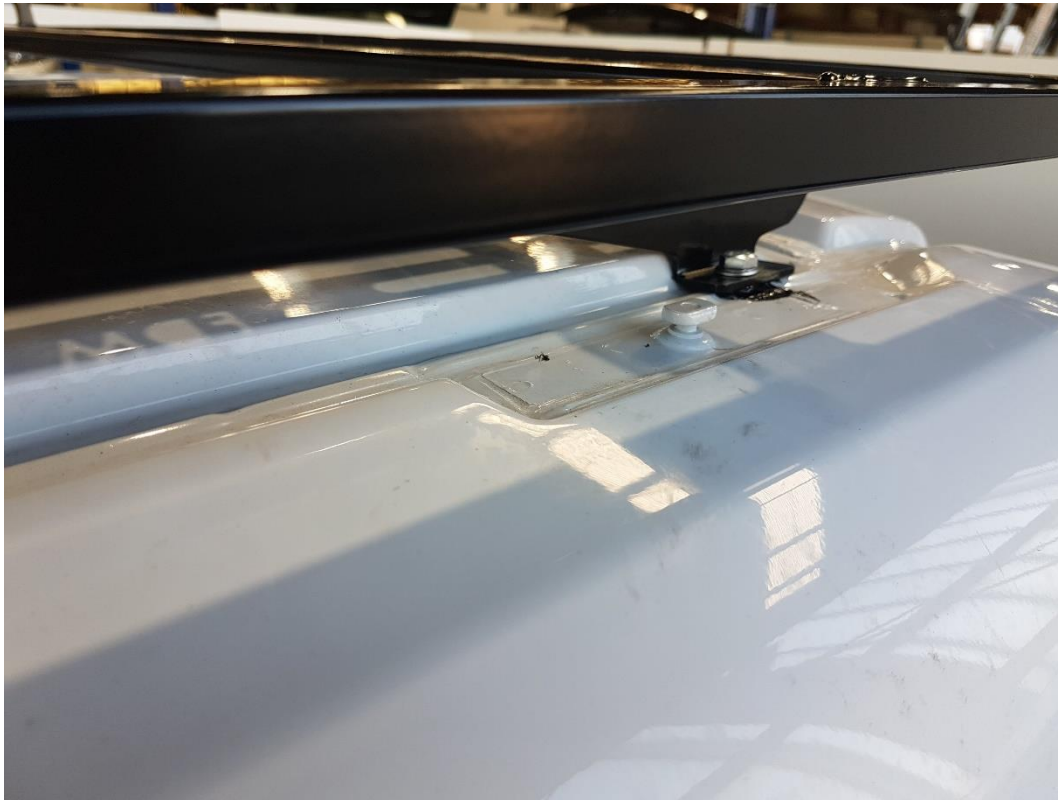
Double check your measurements

Once all holes are marked drill a 5mm hole and then open that up to an 8mm hole.

Make sure to remove any swarf and touch up the exposed metal with paint.

Use a silicone sealant applied to each hole and attach rails to the roof with the supplied bolts and nuts.

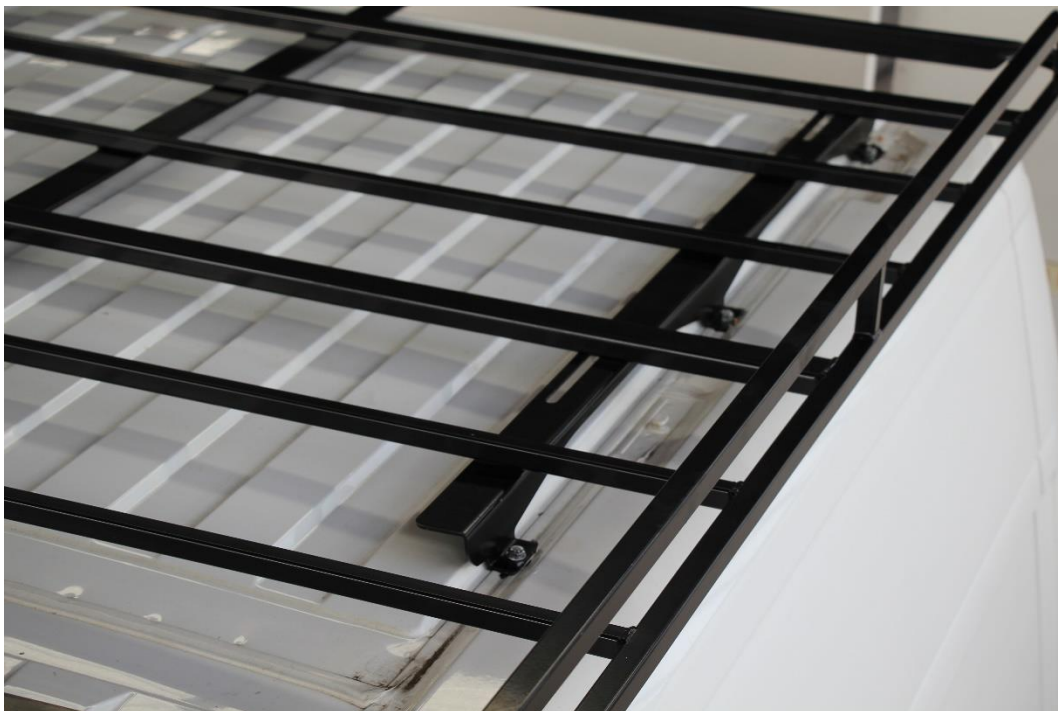
FITTING INSTRUCTIONS



Once all rails are bolted down.

Install the eight **T-bolts** into the rails and mount the rack.

The mounting slots have enough travel to adjust for racks with and without rear ladder rollers.



© Copyright 2020 Tradesman Roof Racks. Tradesman Roof Racks have made every effort to provide correct information contained within the instructions. We retain the right to alter installation specifications and instructions without notice. Always consult us for the latest installation specifications and instructions.

FITTING INSTRUCTIONS

To finish off now hand tighten the eight **T-bolts** and adjust the rack to the desired center and front to back position.

Starting from the rear left corner tighten the **T-bolts** rear to front and the same on the righthand side.

Double check all t-bolts are in the correct position.

If you require any further assistants, please call 03. 9752 5000 Mon-Fri 8am to 5pm

or contact us via email at enquires@tradesmanroofrack.com.au