

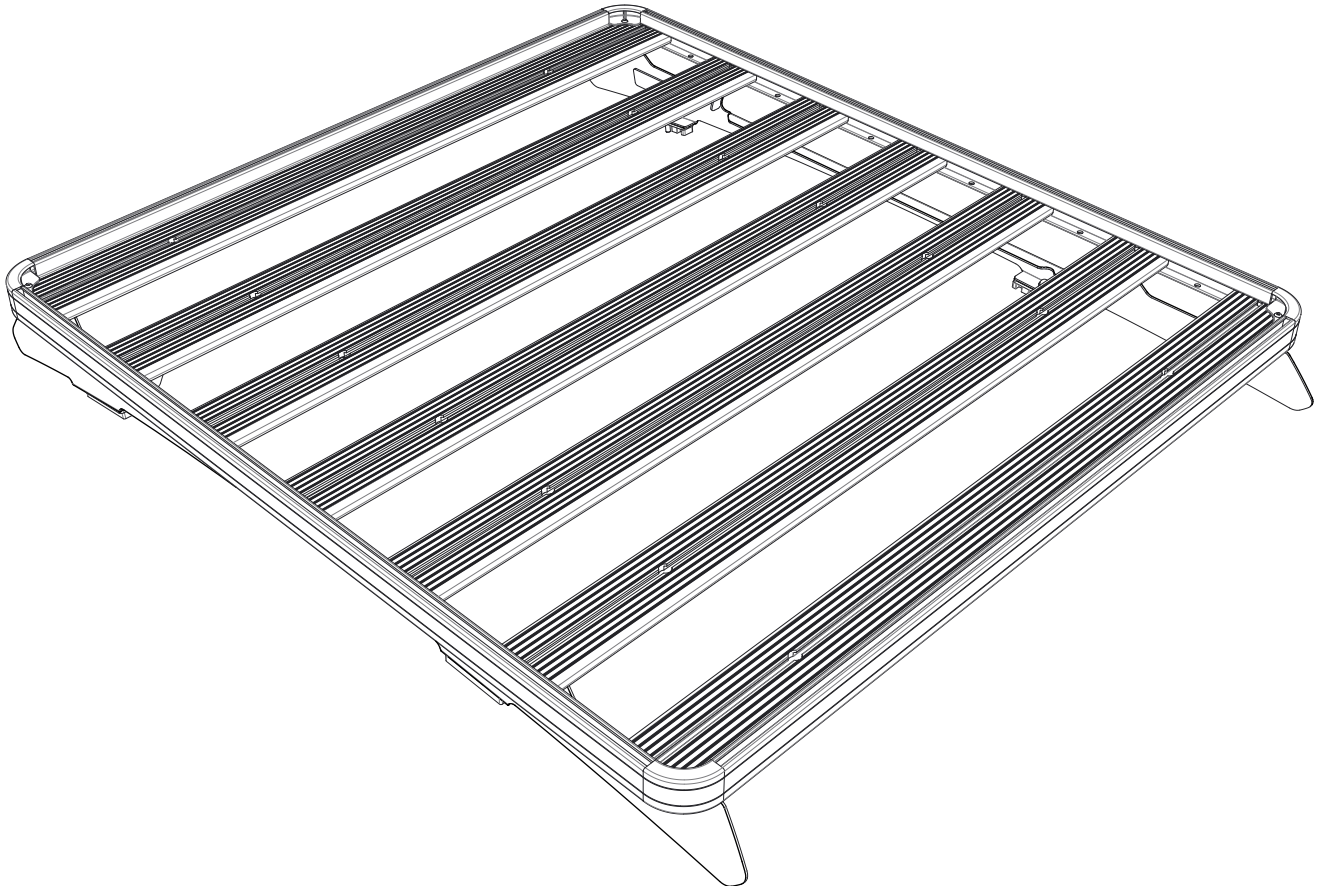


FRONT RUNNER
VEHICLE OUTFITTERS

FOOT RAIL
MITSUBISHI TRITON L200 - 5TH GEN

ENG

FAMT001
KRMT004T



Thank you for purchasing a Front Runner Foot Rail Kit.

Before you start, take a moment to familiarize yourself with this Fitting Instruction and the components received.

Refer to Page 2 for a list of all the components, quantities and tools required.

IMPORTANT WARNING!

IT IS CRITICAL THAT ALL FRONT RUNNER PRODUCTS BE PROPERLY AND SECURELY ASSEMBLED AND ATTACHED TO YOUR VEHICLE.

IMPROPER ATTACHMENT COULD RESULT IN AN AUTOMOBILE ACCIDENT, AND COULD CAUSE SERIOUS BODILY INJURY OR DEATH.

YOU ARE RESPONSIBLE FOR ASSEMBLING AND SECURING ALL FRONT RUNNER PRODUCTS TO YOUR VEHICLE. CHECKING THE ATTACHMENTS PRIOR TO USE, AND PERIODICALLY INSPECTING THE PRODUCTS FOR ADJUSTMENT, WEAR AND DAMAGE.

THEREFORE YOU MUST READ AND UNDERSTAND ALL OF THE INSTRUCTIONS AND PRECAUTIONS SUPPLIED WITH YOUR FRONT RUNNER PRODUCT PRIOR TO INSTALLATION OR USE.

IF YOU DO NOT UNDERSTAND ALL OF THE INSTRUCTIONS AND CAUTIONS, OR IF YOU HAVE NO MECHANICAL EXPERIENCE AND ARE NOT THOROUGHLY FAMILIAR WITH THE INSTALLATION PROCEDURES,

YOU SHOULD HAVE THE PRODUCT INSTALLED BY A PROFESSIONAL INSTALLER OR OTHER QUALIFIED PERSONNEL.

1

GET ORGANIZED

Here is what you are looking at for FAMT001

IN THE BOX

1	12 X	M8x20 Hex Bolt
2	12 X	M8 Nut Cap
3	4 X	M8 Spring Washer
4	12 X	M8 Flat Washer
5	8 X	M8 Nyloc Hex Nut
6	4 X	10mm Spacer
7	2 X	Roof Rail; 1xLH, 1xRH

TOOLS NEEDED

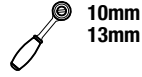
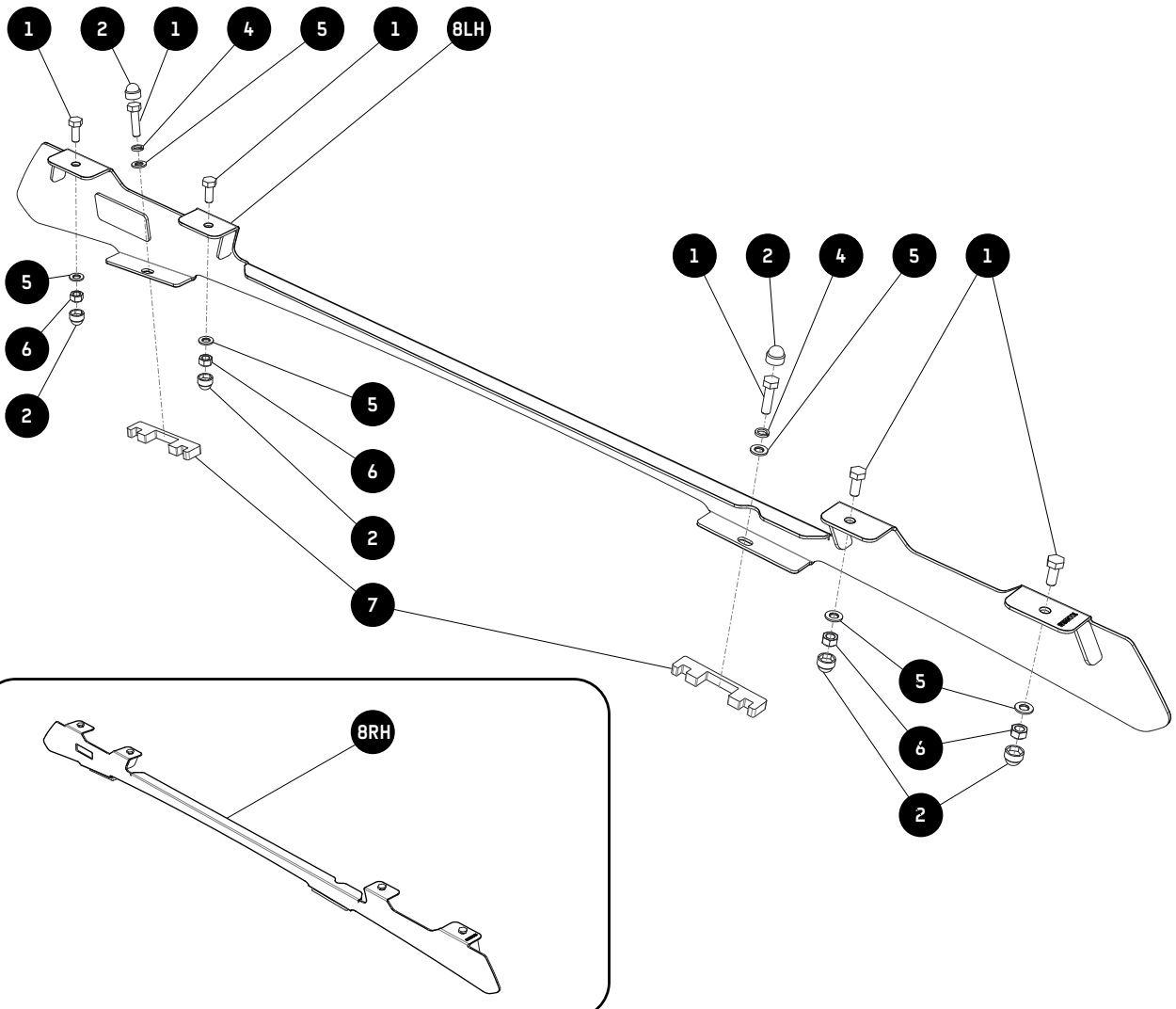


FIGURE 1.1



2

FIT AND SECURE

2.6



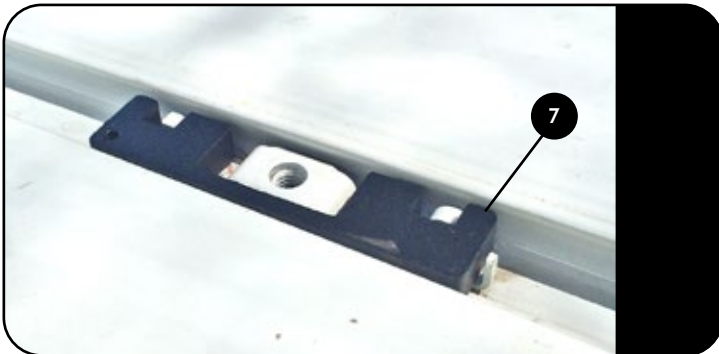
Remove Ditch Mouldings from both sides of the Vehicle

2.7



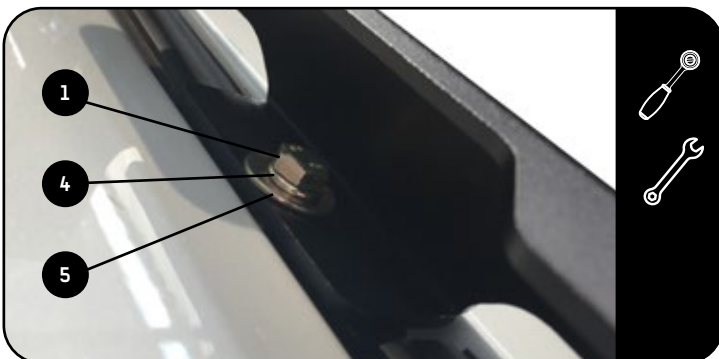
This is what you will see.

2.8



Place the 10mm Spacer over the 4 Mounting Points (Item 7)

2.9



Fit and Secure Foot Rails and Fully Tighten Using Items 1, 4 & 5



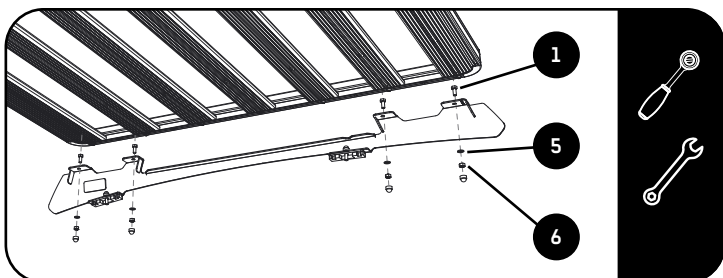
3 FIT AND SECURE

3.1

Refer to RRSTUNI when assembling your Slimline II Tray.
See Step 3.2 You will need to insert Item 6 into the Front Combined Slat before fitting the Wind Deflector.



3.2



Use Item 1, 5 & 6 to Fit and Secure Your Roof Rack to the Foot Rails.

3.2



Take a moment to centre the Rack and Fully Tighten. Use Items 2 to Finish off the Bolts.

4 COMPLETION

4.1



Congratulations you have completed your installation, take a step back and admire your work.

5 INSTALL OTHER VEHICLE AND RACK ACCESSORIES

Now's the time to visit your favorite Front Runner Dealer in person or online.